



# Programme for Leadership Enhancement for Serving Vice-principals 2017

Tutor: Dr. Chan Ka Wai

Ms. Lau Shuk Yin Alice

Mr. Mo Chi Wai Danny

**Legan**<sup>7</sup>

## About Legan

- founded in 1992
- established a formidable reputation as a leader in the data center industry
- providing total solutions for critical environments & **IT infrastructure**, **cloud solution** and **data centre** services

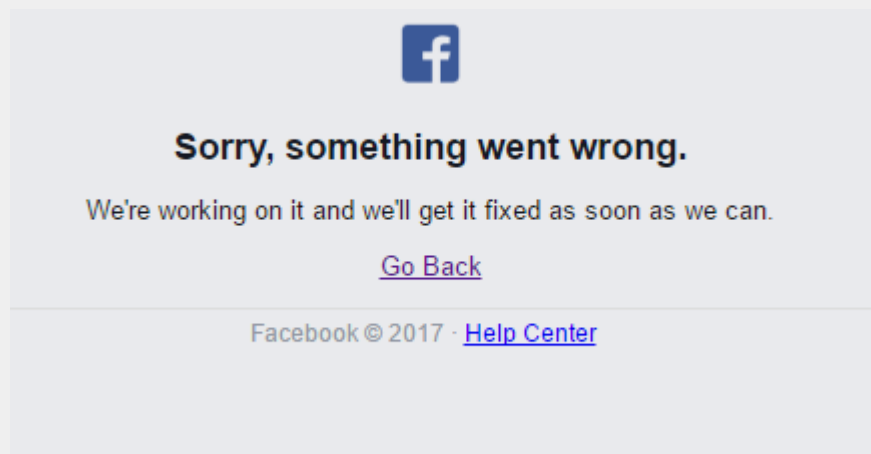


# Importance of Data Centre

頭條日報

2017年5月10日

fb四日內又「死機」歐亞用戶無法登入

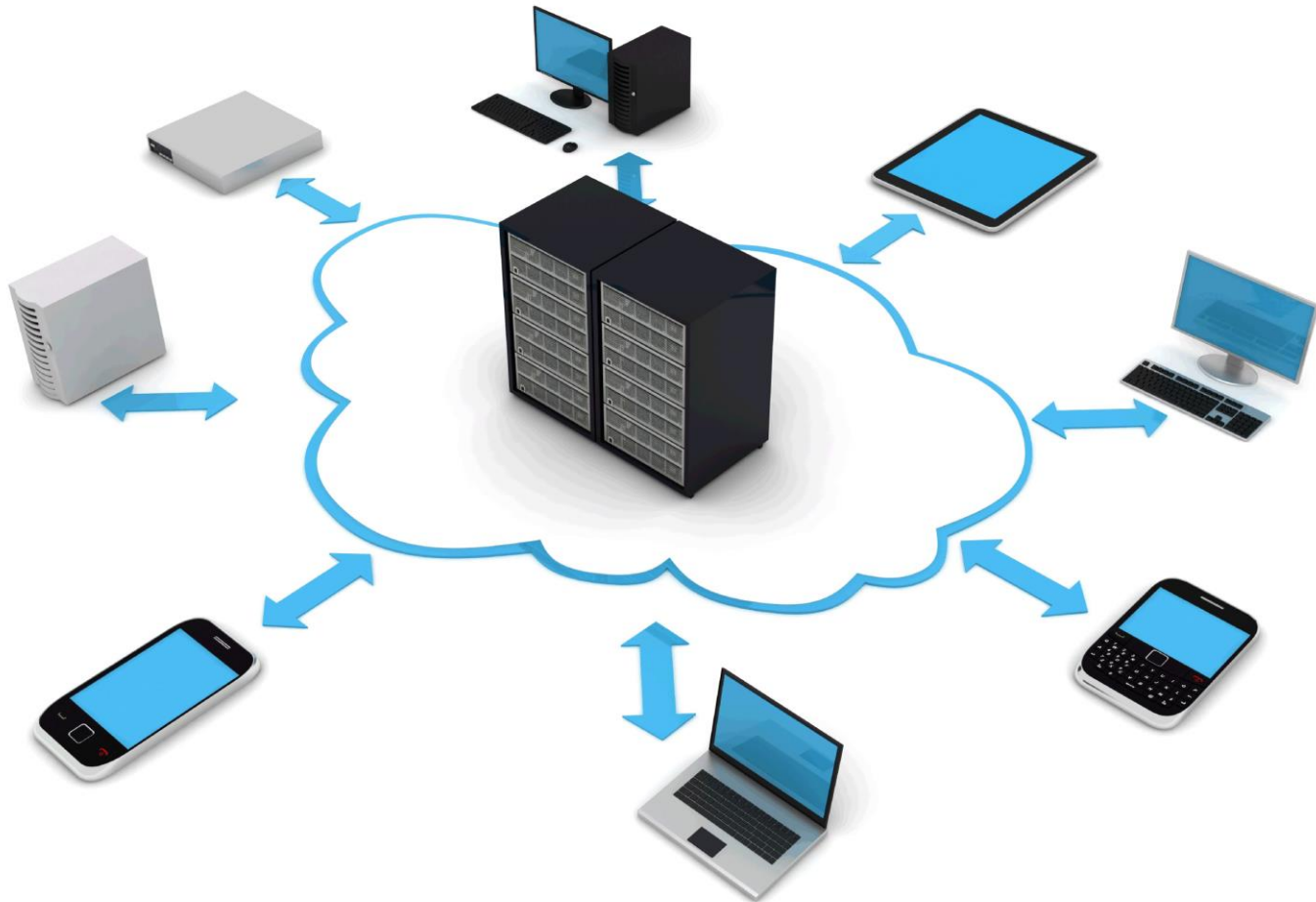


繼上周五有帖子無故「被消失」後，社交網站facebook昨再度發生故障，亞洲多個地區，包括香港、台灣、日本的用戶，一度無法連上桌面版facebook，手機版亦不能更新帖子內容。有電腦專家估計，故障可能與程式更新或伺服器有關。



# Data Centre

*Centre, Connectivity, Cloud*



# IT infrastructure



## Building Materials

- Raised floor system
- Fire-rated wall & door
- Sandwich steel wall panel



## Liquid Detection System

- Water/ fuel/ acid detection
- Single zone
- Multi zone
- Locating
- Non-locating



## Security System

- Door access system
- Biometric system
- Closed circuit television system
- Security booth system



## Fire Protection System

- FM200 gas suppression system
- Pre-action sprinkler system
- Wet sprinkler system
- Early stage smoke detection system



## Facilities Monitoring System

- High level monitoring
- Mimic panel
- Auto dialer



## IT Products & Services

- Networking
- Structured cabling
- Information security
- KVM management
- IP communication system
- Platform integration



# Legan's Company



## Newtech

provides total solutions for critical environments and IT infrastructure. Newtech quickly establishes its reputation as a leader in the data center industry.



## OneAsia

offers end-to-end cloud computing & data centre solutions and business intelligence to business of all sizes.



## Outerspace

provides services including design & build, project management, operation & facility management and policy & compliance management to provide high quality service to customers.



## ReachTec

covers a wide range of mission critical electric and mechanical as well as IT products for data centre applications.



## YoHo eBiz Ltd

is a e-commerce subsidiary offering the style-savvy customer from international cutting-edge labels via worldwide express delivery.



## Appcara

provides cloud application management solutions for companies of all sizes around the world.

# Legan's Presence

The Legan Group has more than 400 employees located across Asia



# Activities schedule

Activities schedule	Session	Duration	Venue	Activities	Person in charge
Mar 14, 17	Introduction	1 hour	Head Office	CEO kick-off	Charles Lee
	Day 1 Process	1 hour		Overview of Legan Group	Julian Wong
		2 hours	Yoho Office	YoHo Business & Operations Overview	Julian Wong, Byron Tse
Mar 28, 17	Day 2 Process	5 hours (including lunch with staff)	Head Office	Frontline Management - Operations	Cliff Kok
Apr 11, 17	Day 3 Process	3 hours (including lunch with staff)	Head Office	Overview of OneAsia	Dominic Wong
		2 hours	ETP	Site Visit	Alvis Yeung
Apr 25, 17	Day 4 Process	3 hours	Head Office	Overview of Newtech	Alvin Tsang
		2 hours	AsiaTone i-Centre	Site Visit	Alvis Yeung
May 2, 17	Farewell, Take & Give	1.5 hours	Head Office	Discussion and Sharing	Charles Lee, Julian Wong



## CEO kick-off

- Mr. Charles Lee
- **the Founder and Managing Director** of Legan Group
- “The Excellence in Achievement of World Chinese Youth Entrepreneurs” at the 9th World Summit of Chinese Entrepreneurs in 2012
- Professional Fellowship from BCS in 2015
- World Outstanding Young Leader in 2016



# Organizational Leadership

- key indicators in the staff appraisal
- **loyalty** and **integrity**
- human resources vs human capital



# Organizational Leadership

- Execution effort (執行力度)=  
**Attitude** (態度) × Directional accuracy (準度) ×  
Quality × (精度) × Speed (速度)
- Discipline (紀律)=  
**Self-discipline** (自律) × Norm (規律) ×  
Heteronomy × (他律) × Law (法律)



# Organizational Leadership

- standardization, tabularization, flowchart, system
- Key step: **recruitment**

企



# Strategic Leadership

- Legan group: matrix management
- general managers (GM) report to the CEO headquarters
- **plan** and **vision** of CEO



源Y真H號



# Leadership knowledge and skills transferred to school

- **Organizational leadership**
- standardization, tabularization, flowchart, system
- appraisal system
- rank score vs descriptive remarks
- Formulation?

- Execution effort (執行力度)=  
**Attitude** (態度) × Directional accuracy (準度) ×  
Quality × (精度) × Speed (速度)
- Discipline (紀律)=  
**Self-discipline** (自律) × Norm (規律) ×  
Heteronomy × (他律) × Law (法律)



# Leadership knowledge and skills transferred to school

- **Strategic leadership**
- management vs leadership
- plan and vision of principal

## 學習階段的更新

**RESTORE**

**Junior Section**  
G.1-G.4  
(6-9歲)



**RETURN**

**Middle Section**  
G.5-G.8  
(10-13歲)



**REVIVE**

**Senior Section**  
G.9-G.12  
(14-17歲)



# Credits

Special thanks to all the people who contribute in this course:

- Dr. HUI Wai Tin | Department of Education Studies HKBU
- Dr. Chan Ka Wai | GT (Ellen Yeung) College
- Mr. Charles Lee | Legan Group
- Mr. Julian Wong | Legan Group
- Ms. Emily Hui | Legan Group
- Ms. Maria Chan | Department of Education Studies HKBU
- All staff in Legan Group, EDUC HKBU, Education Bureau

