



香港教育大學

The Education University  
of Hong Kong

# Programme for Leadership Enhancement for **Serving Vice-Principals** (2023/24)

commissioned by the Education Bureau, HKSAR

## Professional sharing presentation



22<sup>nd</sup> June, 2024

# 華大基因健康科技(香港)有限公司



華大基因  
BGI

華大基因健康科技(香港)有限公司(華大健康)成立於2010年，是華大基因 (BGI Genomics) 旗下發展最為迅速的企業之一。秉承「基因科技造福人類」的使命，自成立以來，華大健康致力於通過簡便且具經濟效益的方式，將全球尖端的多組學科研成果應用於醫學檢測，以大幅降低出生缺陷和提高腫瘤等疾病的診療成效為目標。



# First Visit of BGI



企業文化



使命

基因科技造福人類

願景

健康美麗，做生命時代的引領者。

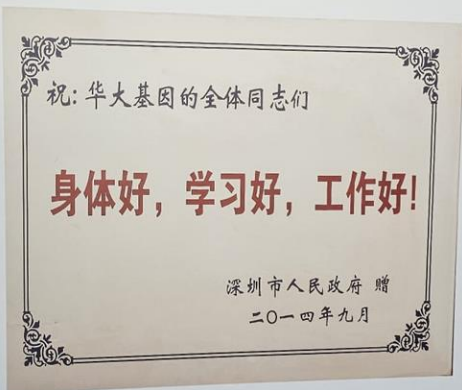
核心價值觀

解讀生命奧妙、譜寫生產華章、體驗精彩人生



华大BGI

22



2014年9月, 深圳市政府贈予华大“三好”牌匾

“身体好, 学习好, 工作好”  
这是华大人践行的三好文化  
身体好, 靠自律, 管住嘴迈开腿  
学习好, 靠自主, 坚持终身学习  
工作好, 靠自驱, 大目标为导向  
要“三好”, 必“三自”  
三好文化  
不仅表达了华大对生命个体的尊重  
更是华大人对生命科学的践行与追求

Values and Culture of BGI Group

**Philosophy**  
World View  
Life Outlook  
Values

**Culture**  
Keep Fit  
Study Well  
Work Hard

**Attitude**  
Self-disciplined  
Independent  
Self-motivated

Human Resources and Support Center

Independent  
Study Well  
Life Outlook  
Values  
Work Hard  
Self-motivated  
Self-disciplined  
Keep Fit  
Vision and Goal

**BGI**

基因科技造福人類  
OMICS FOR ALL

三觀三好

自主  
學習好  
人生觀  
價值觀  
工作好  
自驅

自律  
身體好

大目標

人力資源與保障中心

三觀  
世界觀  
人生觀  
價值觀

三好  
身體好  
學習好  
工作好

三治  
自律  
自主  
自驅

感謝「火眼實驗室」全體隊員  
與香港市民疫境同行

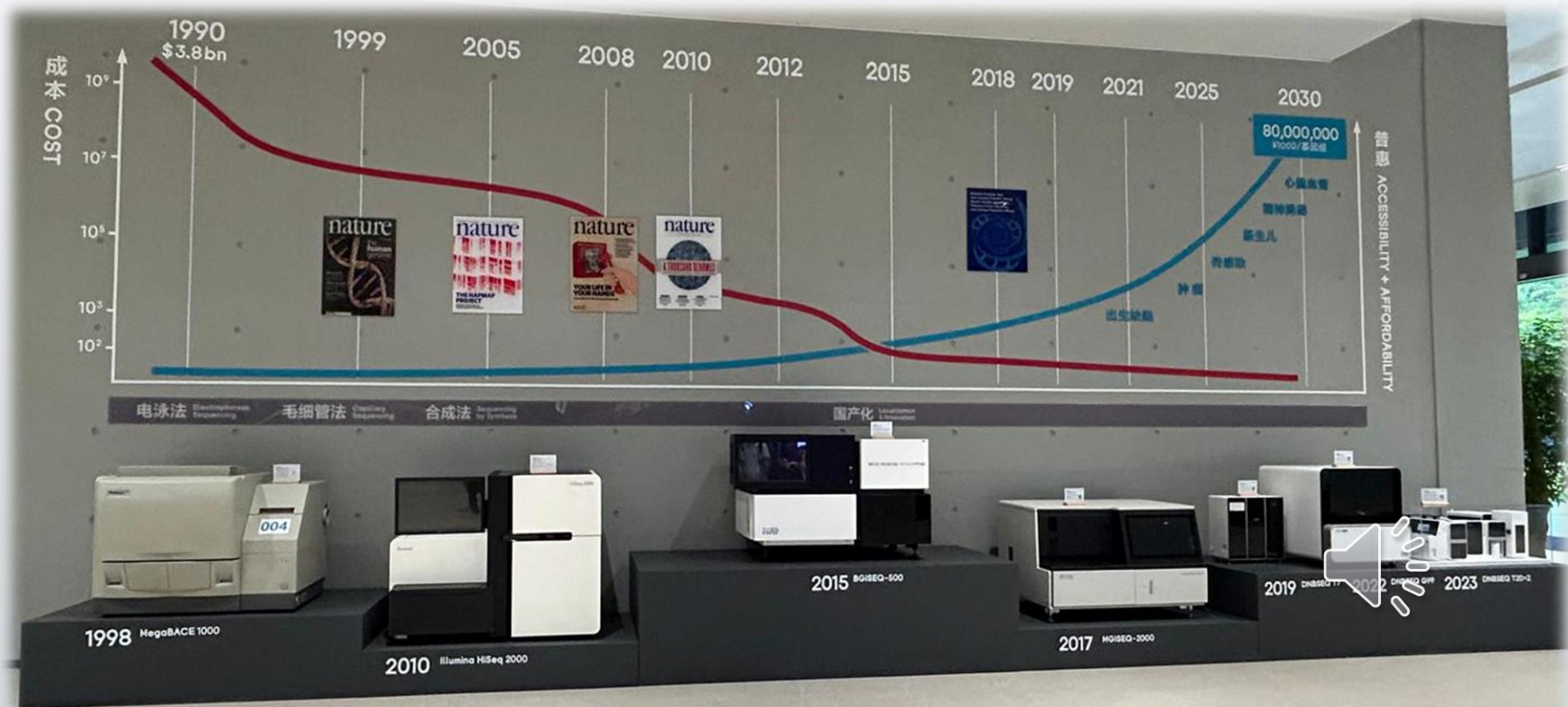
全城抗疫 萬眾一心  
默默耕耘 無私付出

2020年9月  
熱烈歡迎內地核酸檢測支援隊

火眼實驗室  
Huo-Yan Laboratory

# 大家又知唔知8B、6G、i99代表什麼？

8B  
6G  
i99



# 華大環境(內部)



# 華大環境(工作間)



### 新品热饮 NEW PRODUCTS

品名 Drink	中 Tall	热量 KCal
芋泥芋圆奶茶/牛乳 Taro Puree Milk Tea/Milk (iced/hot)	15	237/191
茉莉拿铁 Jasmine Tea Latte (iced/hot)	15	180
生酪拿铁 Cheese Milk Coffee (iced/hot)	16	319

### 特调饮品 SPECIALTY COFFEE

品名 Drink	中 Tall	热量 KCal
鲜榨橙汁 Orange Juice (iced)	16	490
芝士云顶咖啡 Cheese Coffee (iced)	15	146
芝士茉莉奶盖茶 Cheese Tea (iced)	15	153
西柚气泡咖啡 Grapefruit Coffee (iced)	15	55
椰青美式 Coconut Water Coffee (iced)	15	6
生椰拿铁/抹茶 Coconut Milk Coffee (iced)	15	184
鲜橙美式/果茶 Orange Coffee/Tea (iced)	15	87

### 特色咖啡 SPECIALTY COFFEE

品名 Drink	中 Tall	热量 KCal
益养拿铁 Probiotic Latte (hot)	16	160
益燃美式 Probiotic Americano (iced/hot)	16	0

### 经典咖啡 CLASSIC ESPRESSO

品名 Drink	中 Tall	热量 KCal
美式 Americano (iced/hot)	12	0
卡布奇诺 Cappuccino (hot)	15	112
拿铁 Latte (iced/hot)	15	160
香草/榛果/焦糖拿铁 Vanilla / Hazelnut / Caramel Latte (iced/hot)	17	301
摩卡 Coffee Mocha (iced/hot)	17	230
焦糖玛奇朵 Caramel Macchiato (iced/hot)	17	220
燕麦奶拿铁 Oat Milk Latte (iced/hot)	18	200

+2 升级为大杯    -2 浓缩一份

### 特色茶饮 Specialty Tea

品名 Drink	大 Grande	热量 KCal
正山小种(红茶) Lapsang Souchong (hot)	8	0
陈皮普洱茶 Chengpi Pu'er Tea (hot)	8	0
红枸杞普洱茶 Goji Berry Pu'er Tea (hot)	8	19
罗汉果菊花茶 Chrysanthemum Tea (hot)	8	0
菊花龙井茶 Chrysanthemum Longjing Tea (hot)	8	0
红枸杞玫瑰茶 Goji Berry Rose Tea (hot)	8	19
云南普洱 Pu'er Tea (hot)	6	0
伯爵红茶 Earl Grey Tea (hot)	6	0
龙井茶 Longjing Tea (hot)	6	0
西湖明前龙井 West Lake Longjing Tea (hot)	8	0

### 风味饮品 FLAVOR DRINK

品名 Drink	中 Tall	热量 KCal
鲜牛奶 Fresh Milk (iced/hot)	10	207
豆奶 Soy Milk (iced/hot)	12	233
鲜奶可可 Fresh Milk Cocoa (iced/hot)	12	240
抹茶牛奶 Matcha Milk (iced/hot)	12	274
红糖姜茶 Brown Sugar Ginger Tea (hot)	10	76
柠檬红茶 Lemon Black Tea (iced/hot)	10	104
柠檬苏打水 Lemon Soda Water (iced)	10	7
百香果气泡水 Passion Fruit Soda (iced)	15	70
金桔柠檬茶 Citrus Lemon Tea (iced)	15	55
英式奶茶 British Milk Tea (iced/hot)	15	175
燕麦奶 Oat Milk (iced/hot)	16	18

+2 升级为大杯



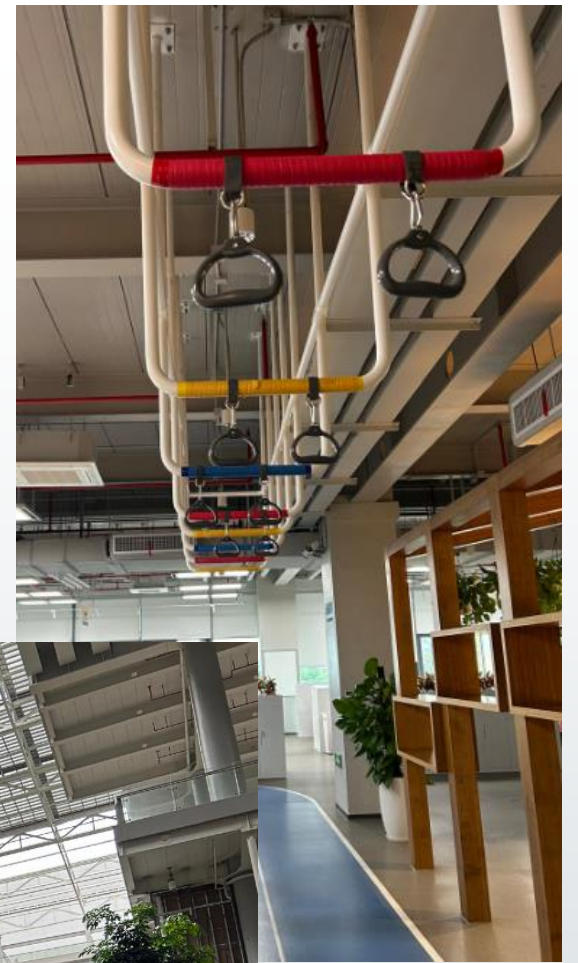
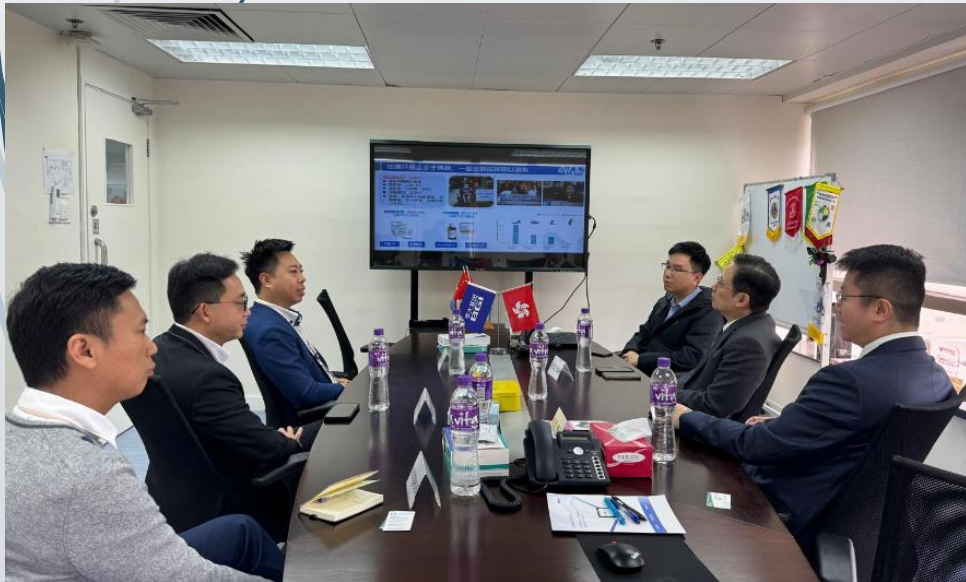
# 水稻新品种 - 多年生稻





# Inspiring Changes at School

- ▶ Instructional Management
- ▶ Organizational Management
- ▶ External relations



# Inspiring Changes at School

- ▶ Instructional Management:
  - ▶ BGI has robust systems for collecting and analysing data
    - ▶ Our school could implement data-driven approaches to assess and refine our instructional practices, utilizing assessment results for program evaluation and teacher evaluations.



# Inspiring Changes at School

- ▶ Instructional Management:
  - ▶ BGI has a clear vision: 基因科技造福人类
    - ▶ Our school would define a clear mission and align its instructional activities to achieve those goals.



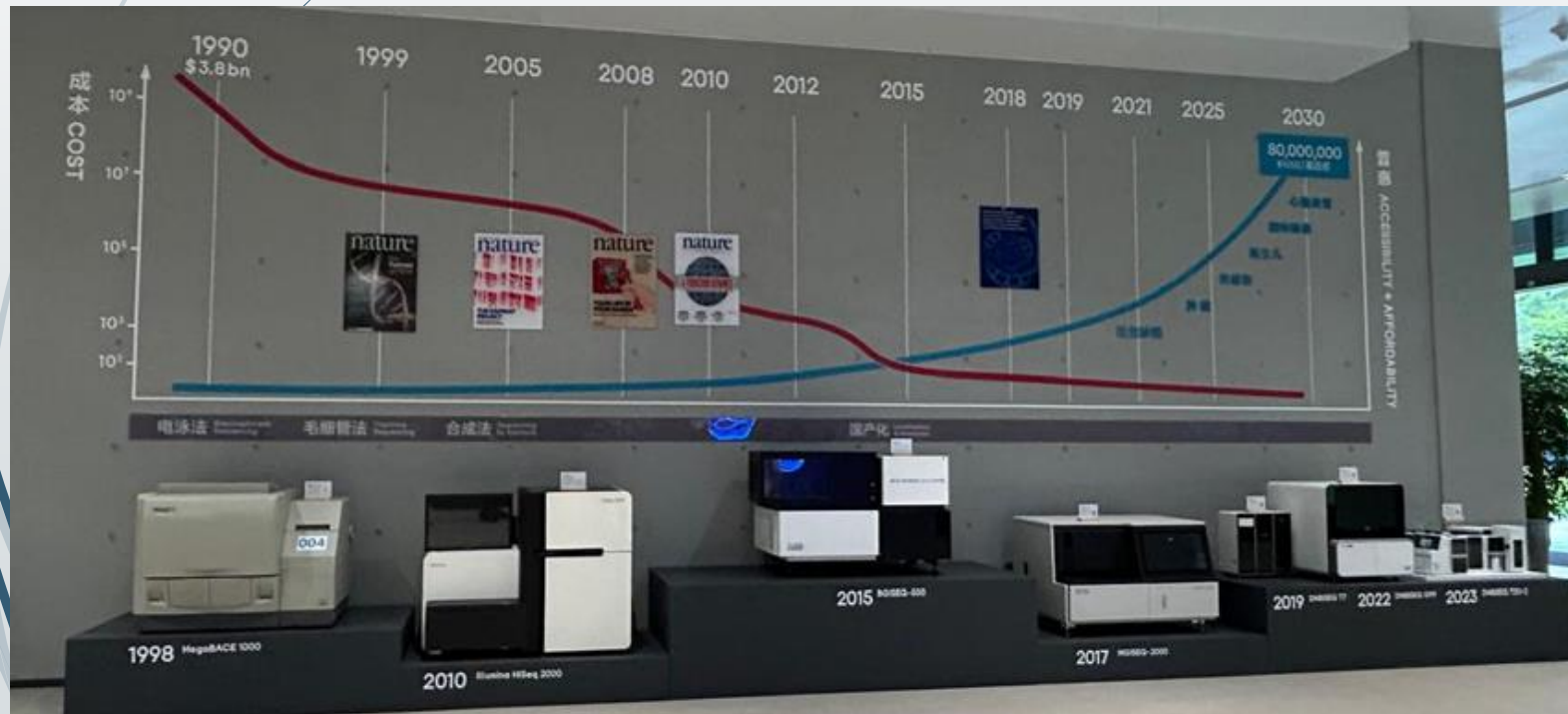
**使命：** 基因科技造福人类

**愿景：** 健康美丽，做生命时代的引领者

**核心价值观：** 解读生命奥妙，谱写产业华章，体验精彩人生

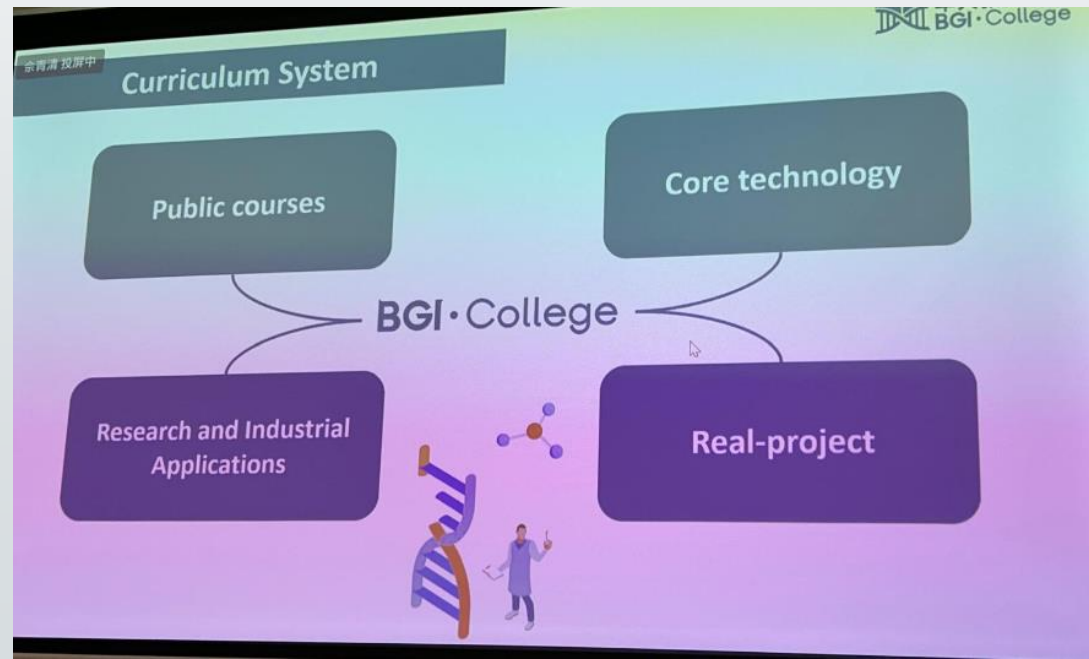
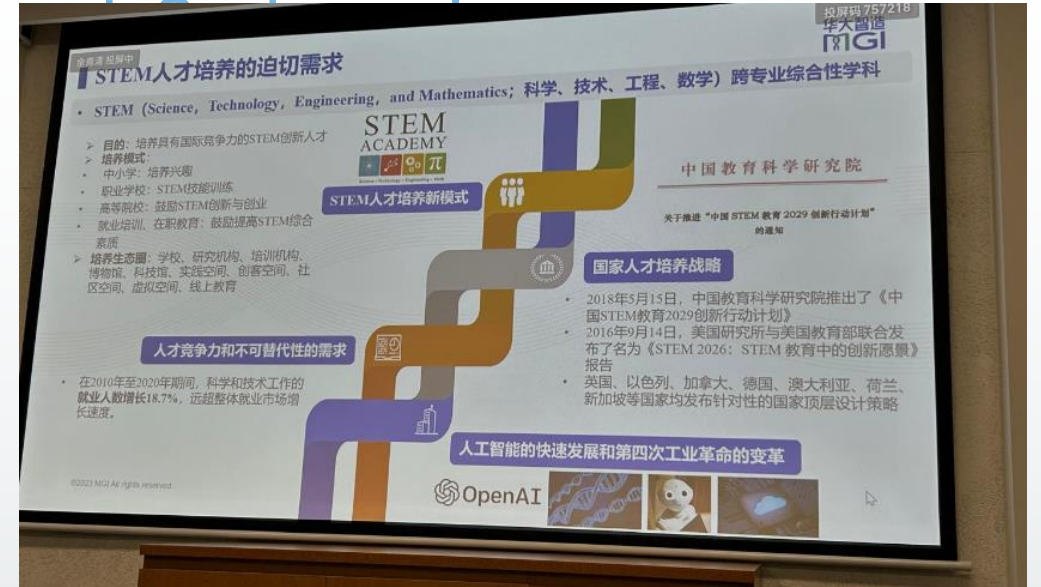
# Inspiring Changes at School

- ▶ Instructional Management:
  - ▶ The development of BGI's machines inspires our school to continuously improve its curriculum and teaching methods.



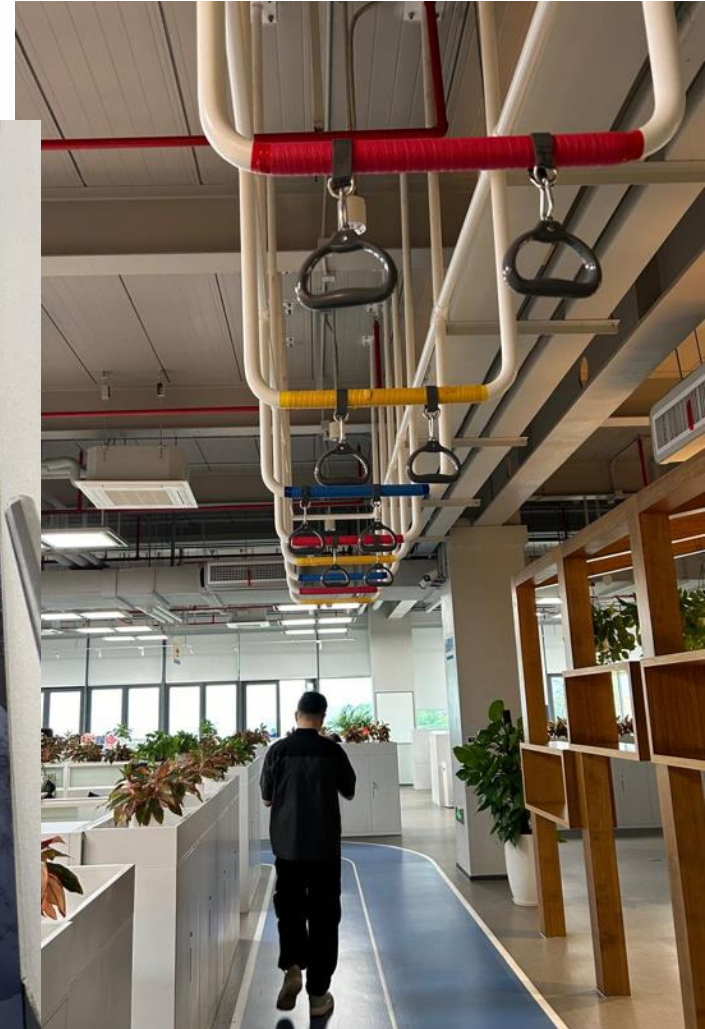
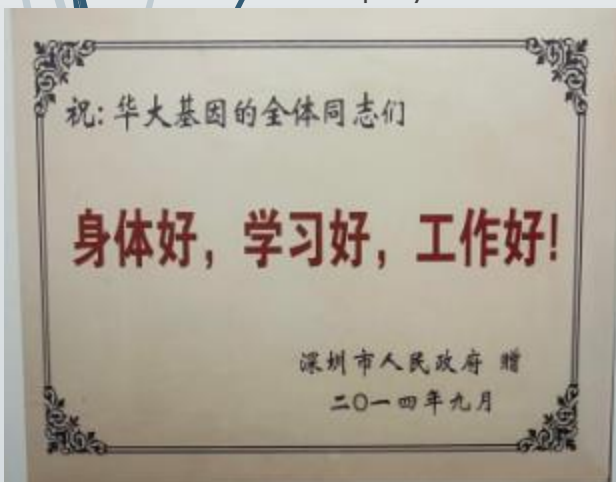
# Inspiring Changes

- Organizational Management:
  - Recruit high-quality teachers
  - Retain teachers and improve their job satisfaction
  - Opportunities for staff to collaborate and build relationships



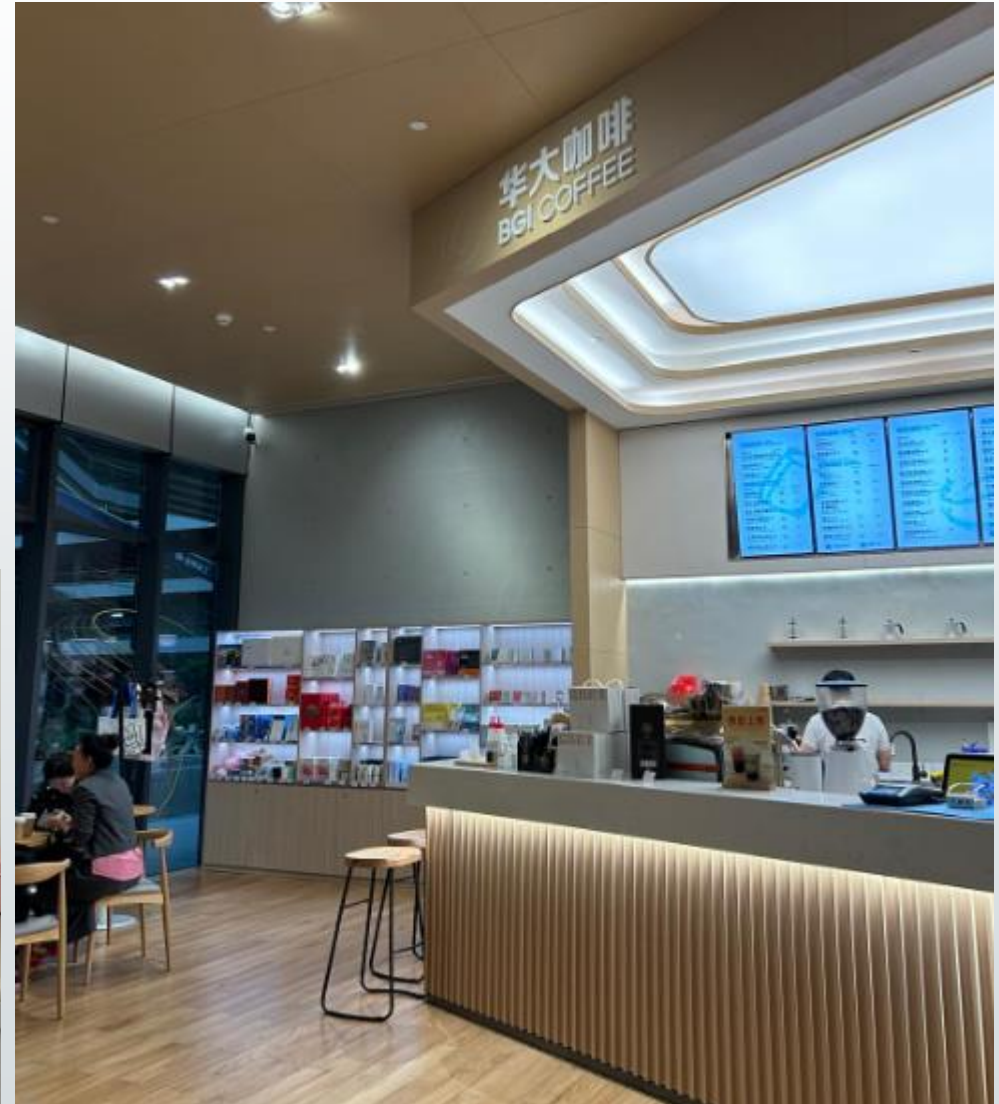
# Inspiring Changes at School

- Organizational Management :
  - Prioritizing wellbeing and promoting healthy lifestyles
    - BGI associates the use of lifts with its staff's BMI.
    - Prioritize the wellbeing of individuals
    - Encouraging more exercise and physical activity



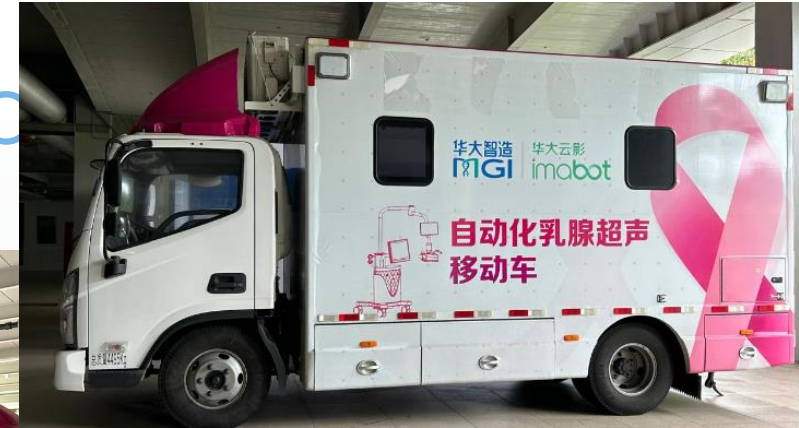
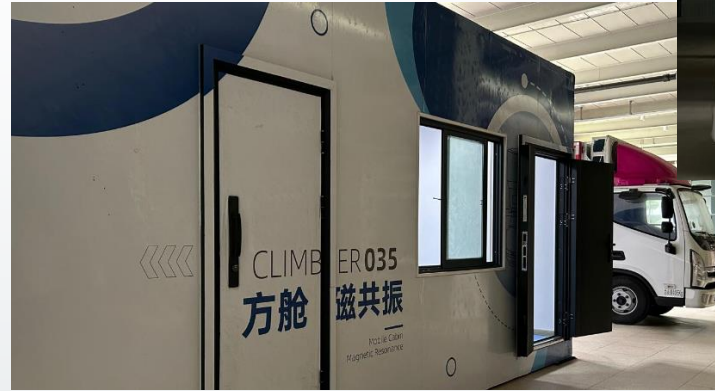
# Inspiring Changes at School

- ▶ Organizational Management :
  - ▶ Prioritizing wellbeing and promoting healthy lifestyles
    - ▶ Coffee



# Inspiring Changes at School

- ▶ Organizational Management :
  - ▶ Prioritizing wellbeing and promoting healthy lifestyles
    - ▶ BGI associates the use of lifts with its staff's BMI.
    - ▶ Prioritize the wellbeing of individuals
    - ▶ Encouraging more exercise and physical activity

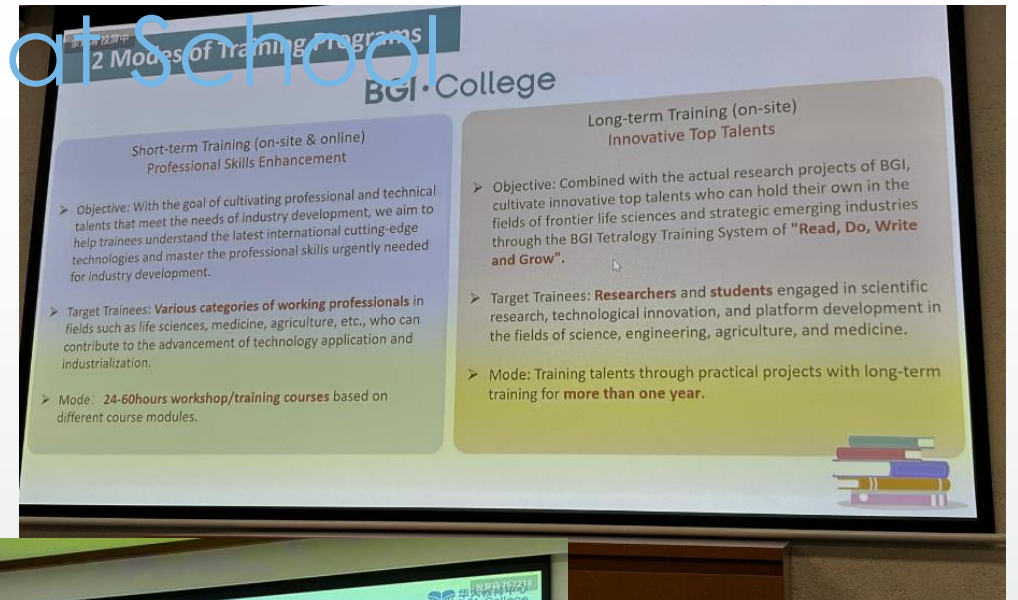




# Inspiring Changes at School

- Organizational Management :
  - Recruitment strategies and efforts to retain and satisfy teachers

華大教育



# Inspiring Changes at School

- ▶ External relations:
  - ▶ Efforts to engage with the broader scientific community, industry partners, and policymakers to shape the future of genomics research and education
  - ▶ Building strong relationships with the local community
  - ▶ collaborating with community organisations



# Inspiring Changes at School

- ▶ External relations:
  - ▶ Efforts to engage with the broader scientific community, industry partners, and policymakers to shape the future of genomics research and education
  - ▶ Building strong relationships with the local community
  - ▶ collaborating with community organisations



# Thank you!

- ▶ 香港教育大學
  - Dr. Ho, Dr. Chu
- ▶ 華大基因BGI、國家基因庫
  - 劉星博士、Astor(聯絡)
- ▶ 指導老師
  - 周德輝校長
- ▶ 組員
  - 陳藝洋副校長、張覺沖副校長、顏智樑副校長

